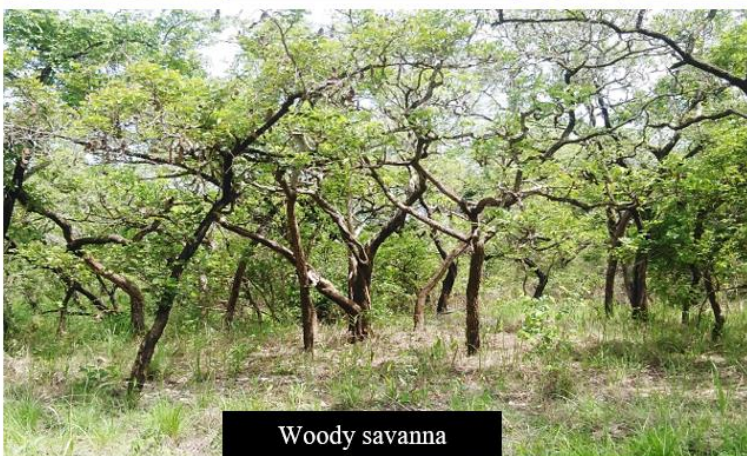


Kouamé Y.A.G., Millan M., N'Dri A.B., Charles-Dominique T., Konan M., Bakayoko A., Gignoux J. (2022). Multispecies allometric equations for shrubs and trees biomass prediction in a Guinean savanna (West Africa). *Silva Fennica* vol. 56 no. 2 article id 10617. <https://doi.org/10.14214/sf.10617>.

## Supplementary file S1

**Fig. 1. Studied facies of the savanna of Lamto Scientific Reserve**



**Fig. 2. Vegetation map of the Lamto Scientific Reserve showing the sampling sites and plots**

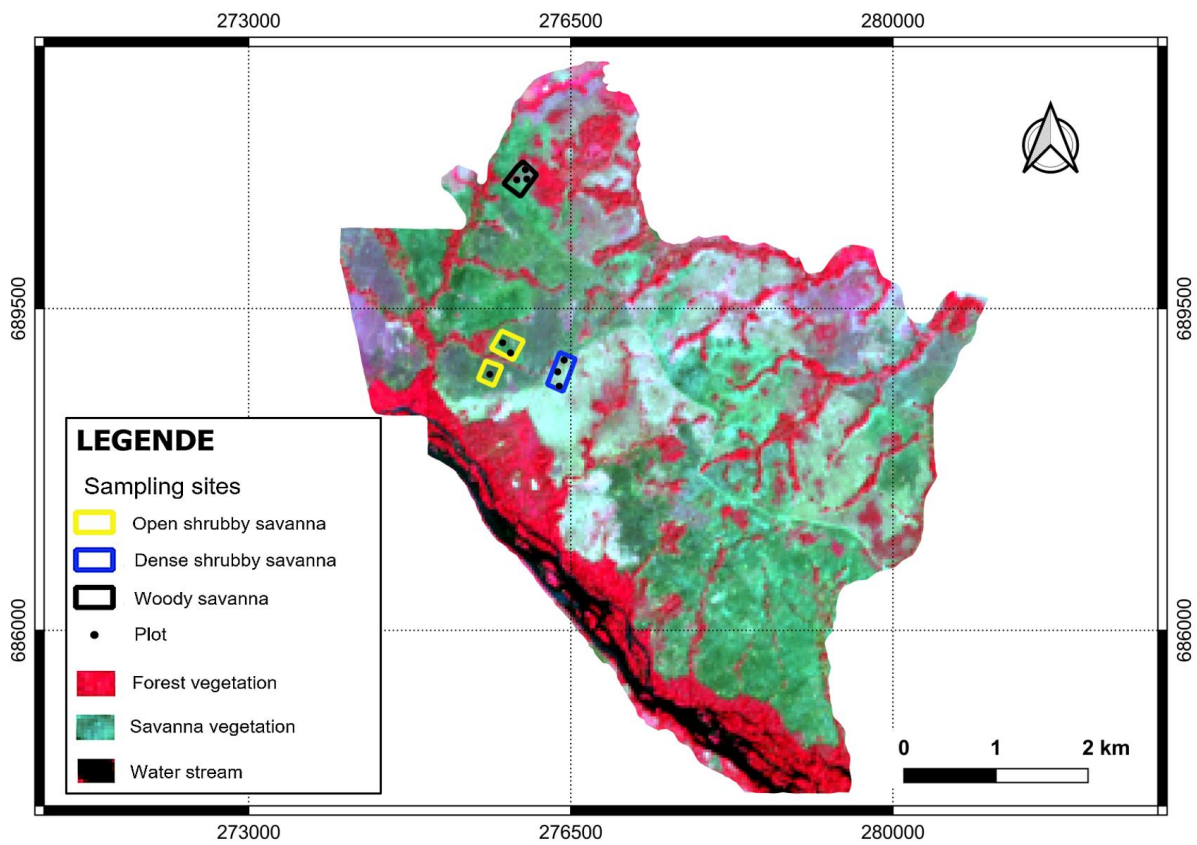


Fig. 3. Aboveground and belowground parts of some specimens of the study species

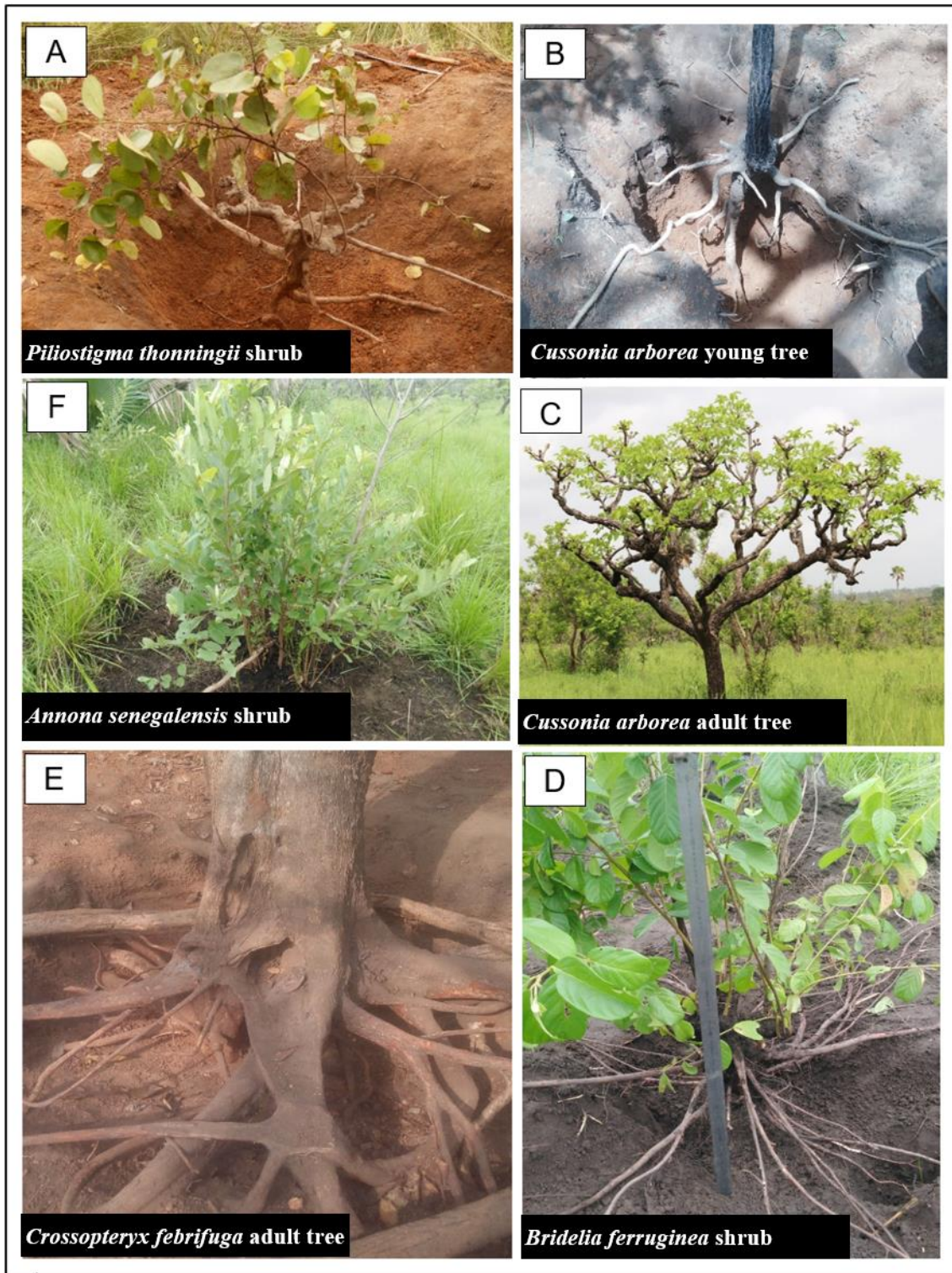


Fig. 3. Aboveground and belowground parts of some specimens of the study species (Suite)



**Fig. 4. Measurement of the stump circumference ( $C_s$ ), used to estimate the stump surface area ( $S_s$ )**

