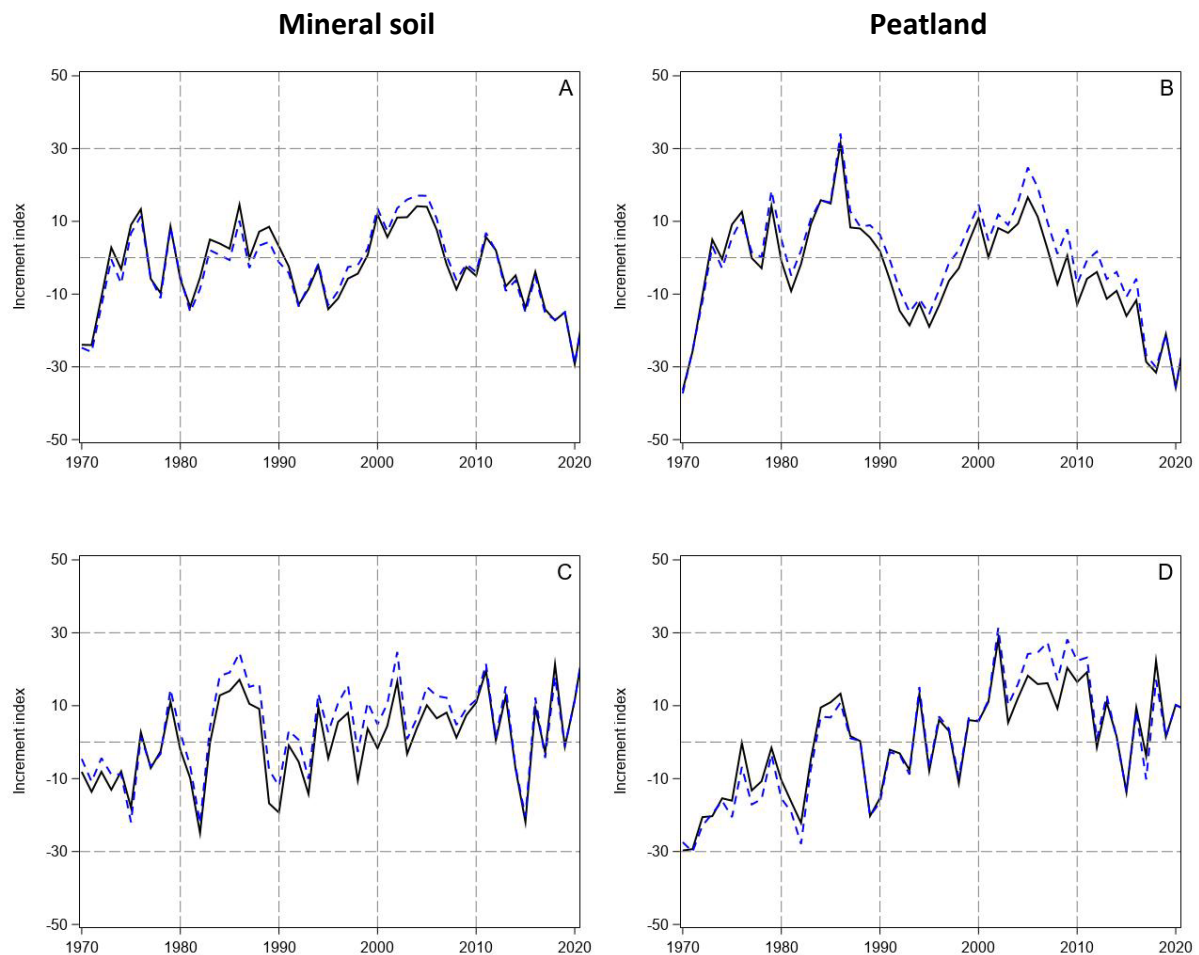


## Supplementary file S3



**Fig. S3.** The tree-ring indices based on the whole data set and based only on the trees cored in 2019, 2020 and 2021 (continuous and dashed lines, respectively) for Scots pine (upper row) and Norway spruce (lower row) in years 1970 – 2021 on mineral soil (left column) and on peatland (right column) in North Finland.