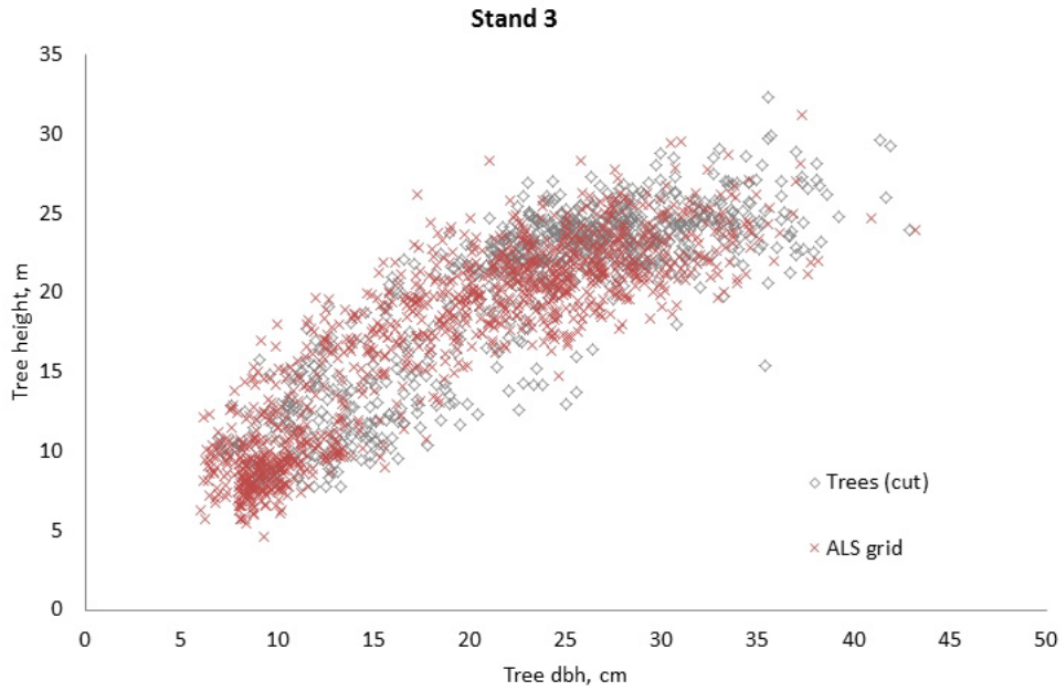


Supplementary file 2



Example of the dimensions of cut trees in stand no. 3 and trees that were generated with models using the ALS grid-based method. Models behind the generated trees were parameter recovery for the Weibull dbh distribution by Siipilehto and Mehtätalo (2013) and the predicted Näslund's height-diameter curve including the model for height variation (i.e. standard deviation for the expected tree height) by Siipilehto and Kangas (2015).